



Noise Monitoring Result

Day Time (0700 - 1900hrs on normal weekdays)

Location: M1a - Harbour Road Sports Centre

Date	Time	Weather	Measurement Noise Level			Baseline Level	Construction Noise Level	Limit Level
			Leq	L10	L90	Leq	Leq	Leq
Unit: dB(A), (30-min)								
02/04/13	10:35	Fine	72.4	75.5	67.0	72	59	75
11/04/13	16:19	Cloudy	72.4	74.5	67.0	72	59	75
16/04/13	16:03	Fine	73.5	75.5	70.5	72	68	75
23/04/13	9:00	Fine	73.9	76.0	70.0	72	69	75

Location: M2b - Noon-day gun area

Date	Time	Weather	Measurement Noise Level			Baseline Level	Construction Noise Level	Limit Level
			Leq	L10	L90	Leq	Leq	Leq
Unit: dB(A), (30-min)								
02/04/13	11:25	Fine	73.9	77.0	69.5	68	73	75
11/04/13	17:13	Cloudy	72.3	73.5	70.0	68	71	75
16/04/13	16:58	Fine	74.0	75.5	70.5	68	73	75
23/04/13	10:00	Fine	71.9	73.8	71.4	68	70	75

Location: M3a - Tung Lo Wan Fire Station

Date	Time	Weather	Measurement Noise Level			Baseline Level	Construction Noise Level	Limit Level
			Leq	L10	L90	Leq	Leq	Leq
Unit: dB(A), (30-min)								
02/04/13	13:00	Cloudy	67.3	69.0	64.5	69	67	75
12/04/13	8:56	Cloudy	70.3	71.0	69.5	69	65	75
16/04/13	8:10	Cloudy	67.5	69.0	63.5	69	68	75
23/04/13	13:25	Fine	67.0	68.5	64.5	69	67	75

* Due to adverse weather condition, daytime noise monitoring at M3a was rescheduled from 11 Apr 2013 to 12 Apr 2013.

Location: M4b - Victoria Centre

Date	Time	Weather	Measurement Noise Level			Baseline Noise Level	Construction Noise Level	Limit Level
			Leq	L10	L90	Leq	Leq	Leq
Unit: dB(A), (30min)								
02/04/13	14:13	Cloudy	71.4	73.0	68.5	67	69	75
12/04/13	09:42	Cloudy	69.8	71.0	68.0	67	66	75
16/04/13	08:50	Cloudy	72.3	75.5	67.5	67	71	75
23/04/13	14:10	Fine	70.9	72.0	68.5	67	68	75

* Due to adverse weather condition, daytime noise monitoring at M4b was rescheduled from 11 Apr 2013 to 12 Apr 2013.

Location: M5b - City Garden

Date	Time	Weather	Measurement Noise Level			Baseline Level	Construction Noise Level	Limit Level
			Leq	L10	L90	Leq	Leq	Leq
Unit: dB(A), (30min)								
03/04/13	13:50	Cloudy	72.9	75.0	68.5	68	71	75
12/04/13	13:09	Cloudy	70.6	73.5	66.5	68	67	75
16/04/13	09:35	Cloudy	75.9	77.5	72.0	68	75	75
23/04/13	11:10	Fine	72.5	74.5	71.0	68	71	75

*Due to adverse weather condition, daytime noise monitoring at M5b was rescheduled from 2 Apr 2013 to 3 Apr 2013 and from 11 Apr 2013 to 12 Apr 2013.

Location: M6 - HK Baptist Church Henrietta Secondary School

Date	Time	Weather	Measurement Noise Level			Baseline Level	Construction Noise Level	Limit Level
			Leq	L10	L90	Leq	Leq	Leq
Unit: dB(A), (30-min)								
03/04/13	14:35	Cloudy	75.4	76.5	73.5	71	74	70
12/04/13	10:32	Cloudy	76.6	77.5	75.0	71	75	70
16/04/13	10:15	Cloudy	74.7	75.5	73.0	71	72	70
23/04/13	15:55	Fine	74.6	76.0	73.0	71	72	70

*Due to adverse weather condition, daytime noise monitoring at M6 was rescheduled from 2 Apr 2013 to 3 Apr 2013 and from 11 Apr 2013 to 12 Apr 2013.



Noise Monitoring Result

Day Time (0700 - 1900hrs on normal weekdays)

Location: M7e - International Finance Centre (Eastern End of Podium) (Reference Station)

Date	Time	Weather	Measurement Noise Level			Baseline Level	Construction Noise Level	Limit Level
			Leq	L10	L90	Leq	Leq	Leq
Unit: dB(A), (30-min)								
02/04/13	8:50	Fine	71.8	73.0	69.0	67	70	N/A
11/04/13	8:31	Cloudy	69.9	71.5	67.5	67	67	N/A
16/04/13	13:41	Fine	70.9	72.0	69.0	67	69	N/A
23/04/13	10:35	Fine	74.2	75.5	71.0	67	73	N/A

Location: M7w - International Finance Centre (Western End of Podium)

Date	Time	Weather	Measurement Noise Level			Baseline Level	Construction Noise Level	Limit Level
			Leq	L10	L90	Leq	Leq	Leq
Unit: dB(A), (30-min)								
02/04/13	8:15	Fine	67.6	69.0	64.5	69	68	75
11/04/13	9:09	Cloudy	67.1	68.5	64.5	69	67	75
16/04/13	14:25	Fine	67.5	68.0	65.0	69	68	75
23/04/13	10:00	Fine	68.5	70.0	66.0	69	69	75

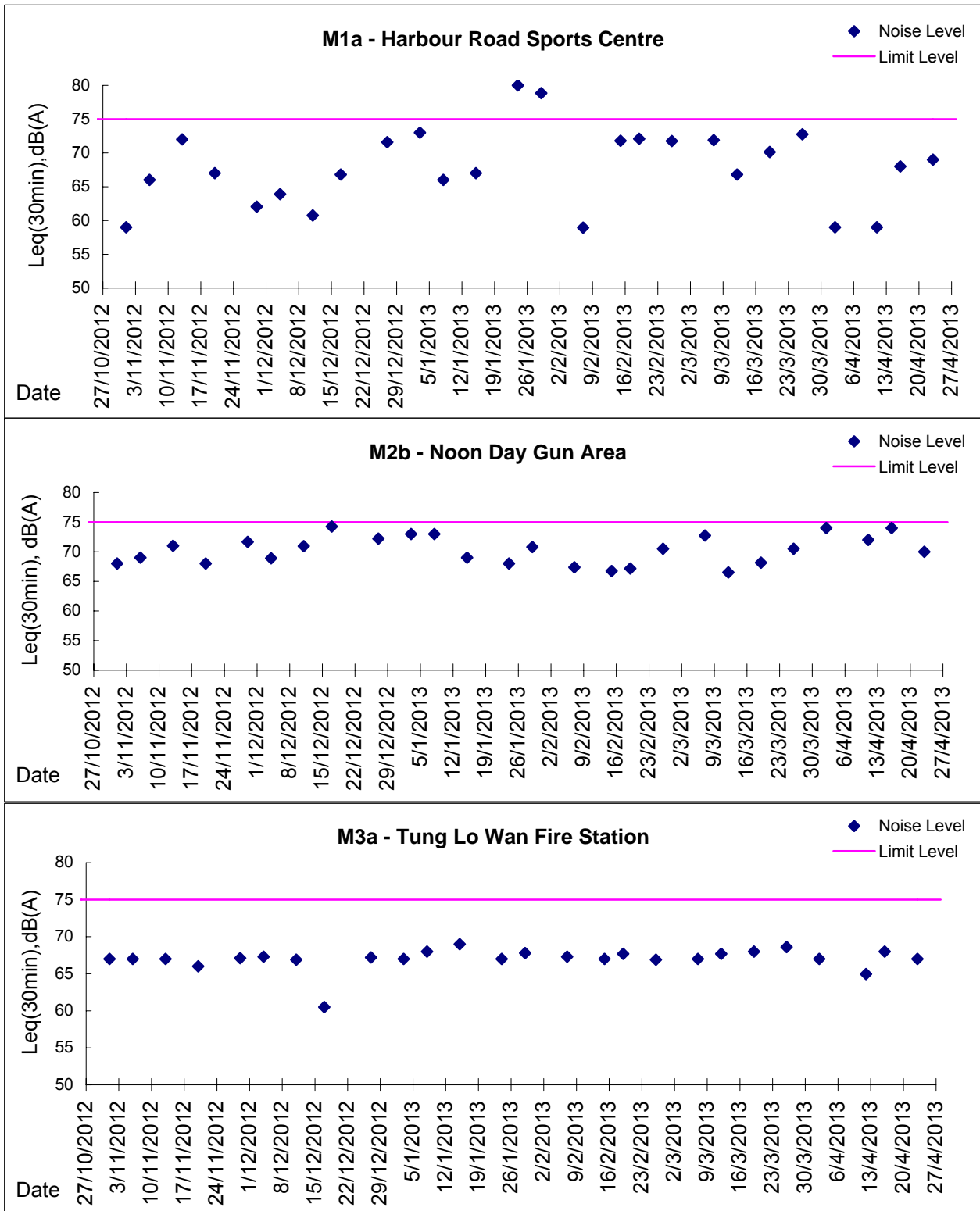
Location: M8 - City Hall

Date	Time	Weather	Measurement Noise Level			Baseline Level	Construction Noise Level	Limit Level
			Leq	L10	L90	Leq	Leq	Leq
Unit: dB(A), (30-min)								
02/04/13	9:50	Fine	61.9	64.0	57.5	64	62	70
11/04/13	15:31	Cloudy	61.4	63.5	57.5	64	61	70
16/04/13	15:15	Fine	63.0	66.0	57.5	64	63	70
23/04/13	11:20	Fine	60.0	62.0	55.5	64	60	70



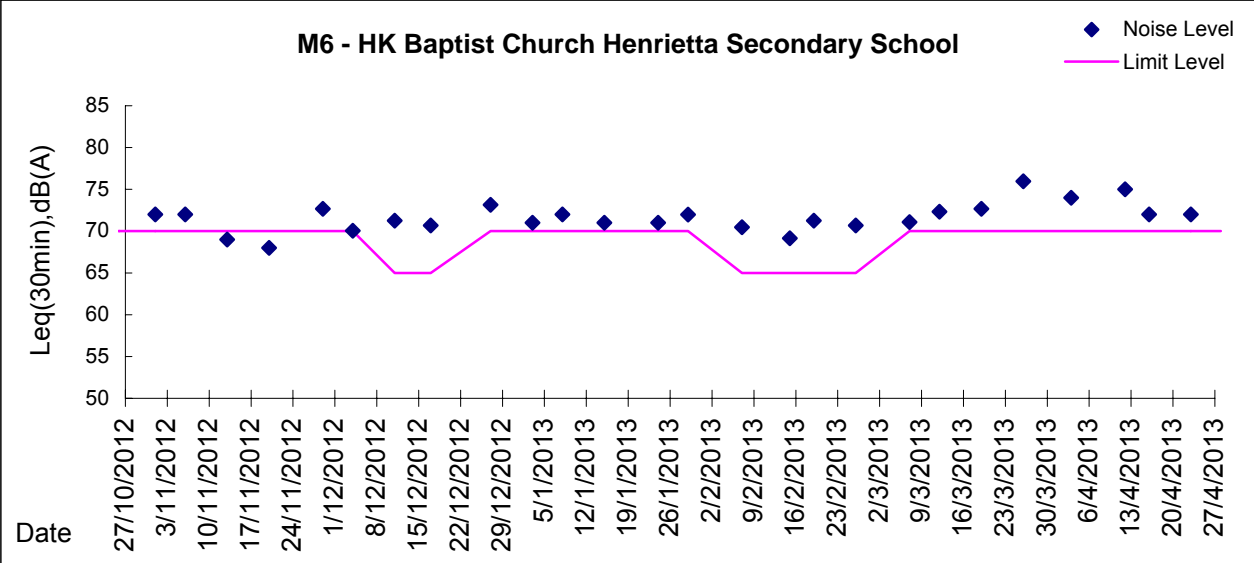
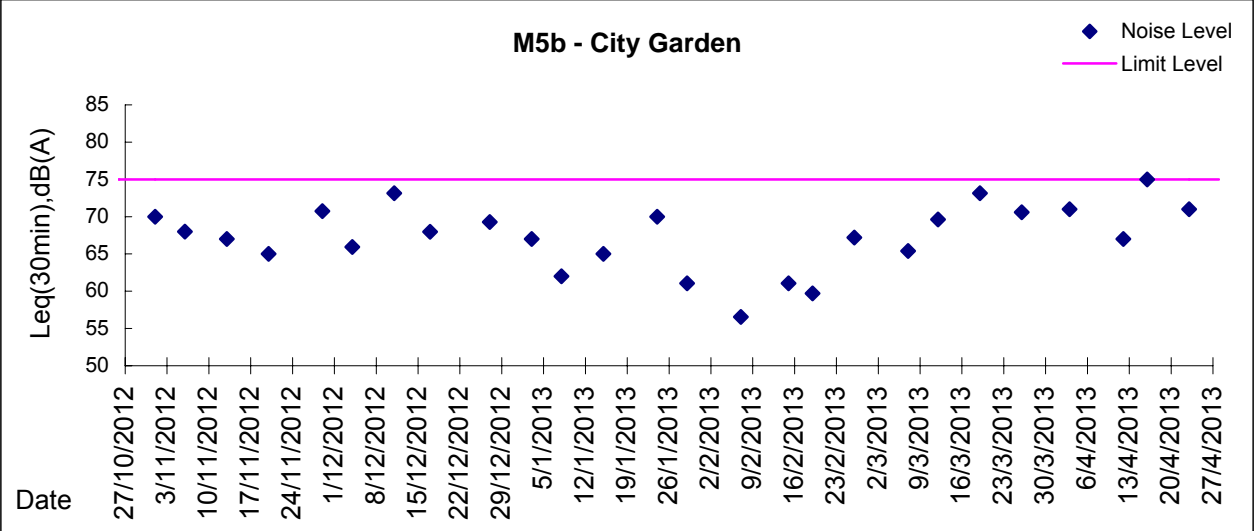
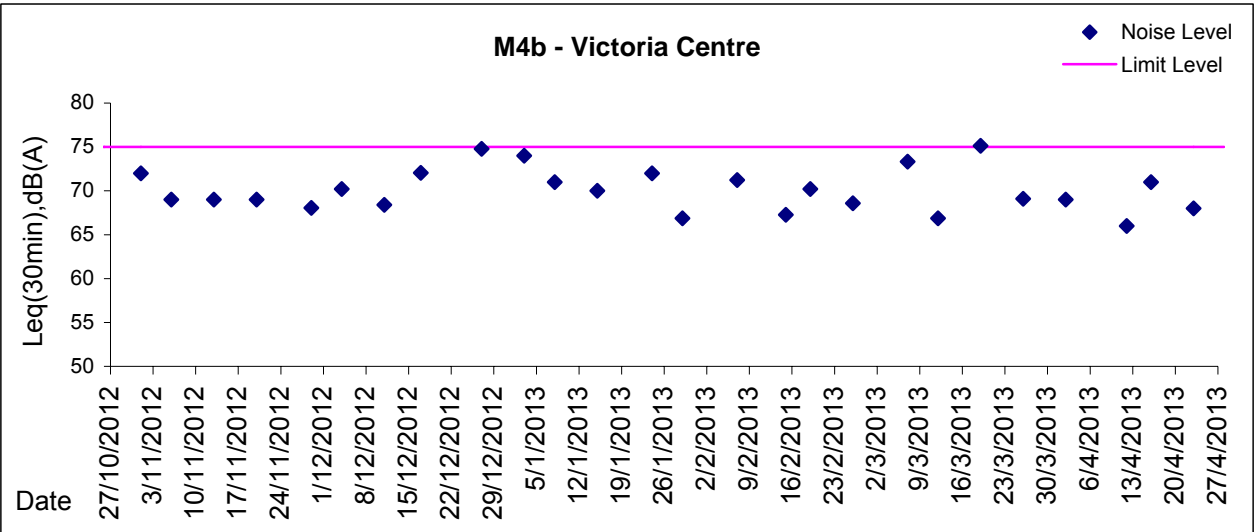
Graphic Presentation of Noise Monitoring Result

Day Time (0700 - 1900hrs on normal weekdays)



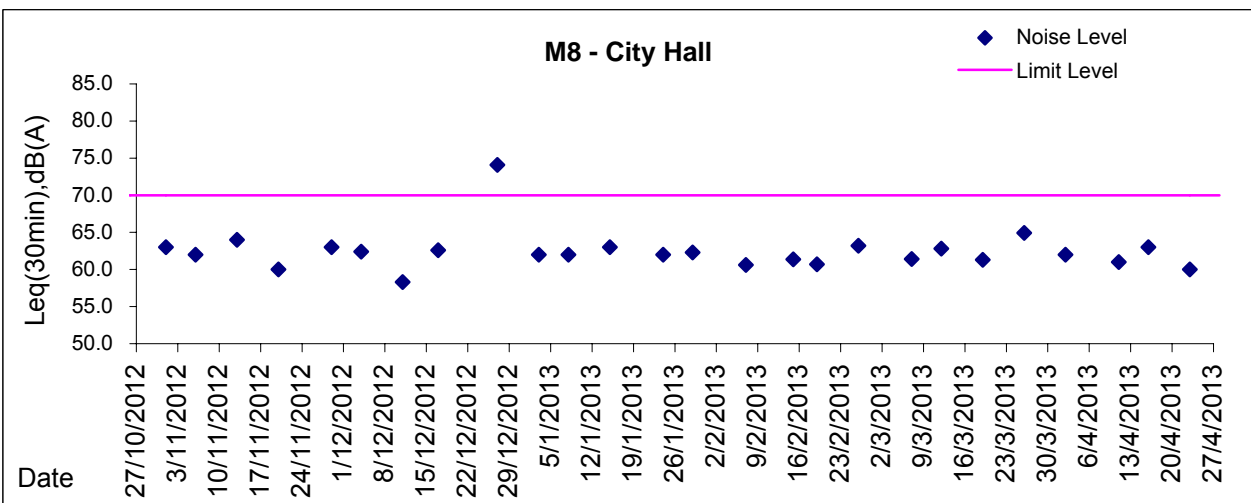
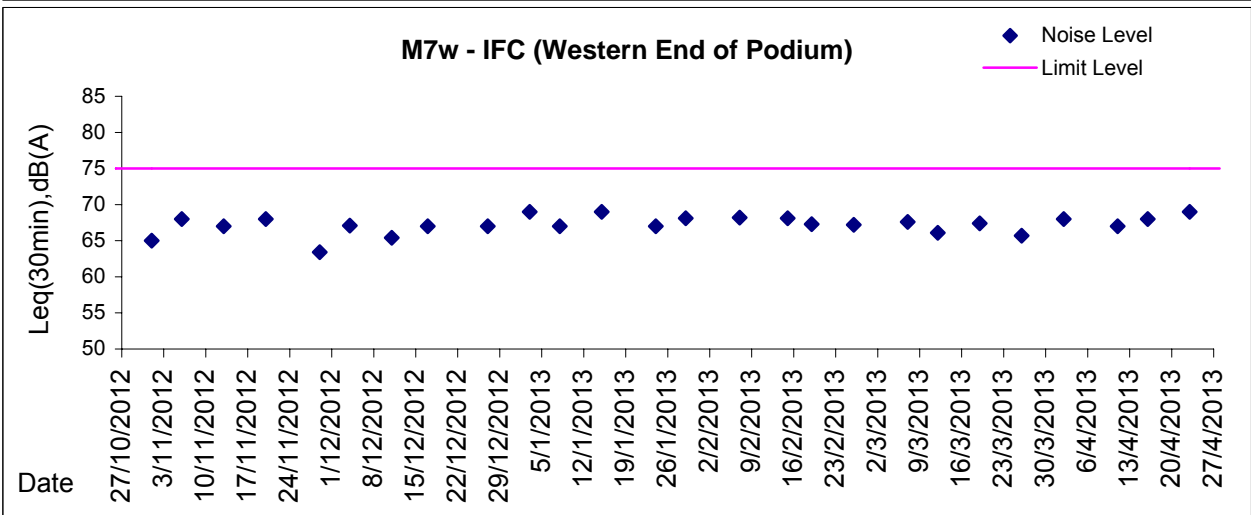
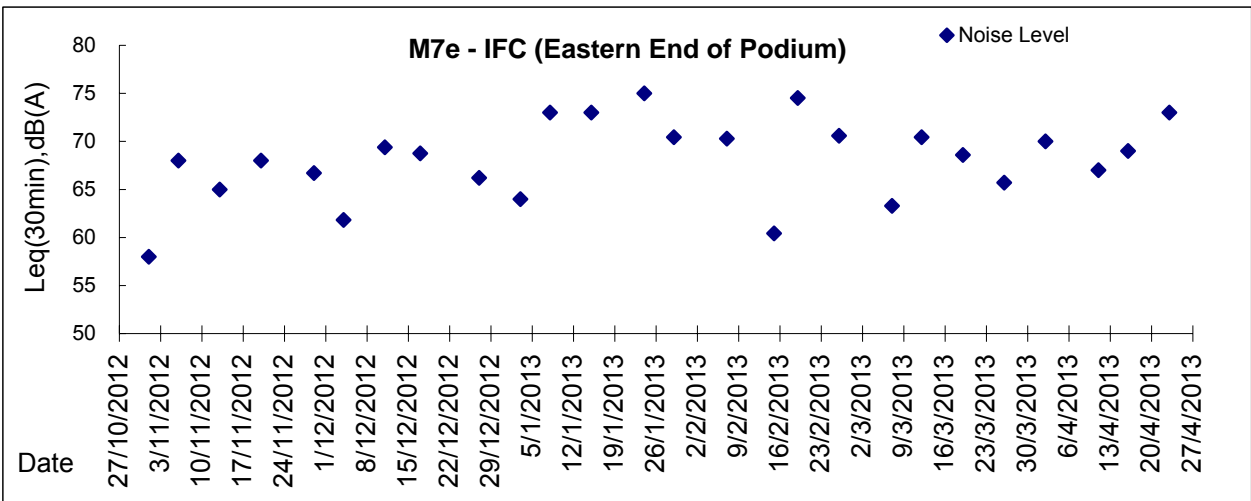


Graphic Presentation of Noise Monitoring Result
Day Time (0700 - 1900hrs on normal weekdays)





Graphic Presentation of Noise Monitoring Result
Day Time (0700 - 1900hrs on normal weekdays)



* Remark: M7e - IFC (Eastern End of Podium) is a reference monitoring station